



Jesters Game (Pt5)

By
Sharpe

Falcon Version	Patch Status	Theatre of Operations (Check one)					
BMS	4.32 Patch 7	Korea	X	Korea PvP		Korea Old Aircraft	
		Korea Original		Korea Strong DPRK		Israel 0.991	
		Battle for Balkans 1.12 SP		Battle for Sinai 2.23 SP			

Package Information

Takeoff time	Callsign	Data ID	Task	Target	Package #	AC # & type
16:49:00	Zipper 1	NA	Training	Server Host Back Up	3809	1 x F-16C-52
16:45:00	Cowboy 1	X1	QRA	Protect Osan AFB from air attack.	3724	4 x F-16C-52
16:45:15	Falcon 1	X2	QRA	Protect Osan AFB from air attack.	3724	4 x F-16C-52
16:45:30	Fury 1	X3	QRA	Protect Osan AFB from air attack.	3724	4 x F-16C-52
16:45:45	Lobo 1	X4	QRA	Protect Osan AFB from air attack.	3724	4 x F-16C-52
16:01:48	Chalis 1	NA	AWAC	C41STAR	3729	1 x E-3

⁽¹⁾ Blue colour indicates for human use. Red colour indicates for AI only.

Mission Success criteria	Cowboy 1	Osan main airbase still active, no more than 1 aircraft lost.
	Falcon 1	Osan main airbase still active, no more than 1 aircraft lost.
	Fury 1	Osan main airbase still active, no more than 1 aircraft lost.
	Lobo 1	Osan main airbase still active, no more than 1 aircraft lost.
Mission Partial Success criteria	Cowboy 1	Osan main airbase destroyed, no more than 2 aircraft lost.
	Falcon 1	Osan main airbase destroyed, no more than 2 aircraft lost.
	Fury 1	Osan main airbase destroyed, no more than 2 aircraft lost.
	Lobo 1	Osan main airbase destroyed, no more than 2 aircraft lost.

Communications Frequencies	UHF	CH	VHF	CH	DL
AWACS/Package	307.300	13			
Tanker		NA			
Cowboy 1 (Tacan 11/74)			138050	1	1X
Flacon 1 (Tacan 16/79)			138100	2	2X
Fury 1 (Tacan 21/84)			138200	3	3X
Lobo 1 (Tacan 26/89)			126200	4	4X
Air to Air Weapon Loadout (Free or Fixed)	Free				
Air to Ground Weapon Loadout (Free or Fixed)	Free				
Mission Flight plan (Free or Fixed)	Free				

[Special note for mission briefer]:

- 1) Get everyone into first chat, DO NOT read the briefing, do all necessary coms/IVC checks in first chat.
- 2) Once everyone is confirmed ready, tell the group that once they get into the 2d map THE CLOCK WILL REMAIN RUNNING - no one is to set the clock to 0.
- 3) Allocate people to flights (they are all the same).
- 4) Read the briefing at this point (with people still in first chat).
- 5) Tell people that flight planning/stores etc will be done in the 2d map WITH THE CLOCK RUNNING.
- 6) Remind people that it's a ramp start and that they **MUST COMPLETE a full INS alignment**.
- 7) Start up the mission immediately (you are not to take any questions or allow any time for bio/tea breaks) just load the map and get people in with the clock running.

The idea is that people need to hurry to get into the pit and into the air - it's a scramble! People can spend as long as they like messing around in the 2d map and asking questions, but the enemy are getting closer every second and it's a RAMP start. Theoretically, the package commander will tell everyone to commit and the flight leads will brief in the pit.

Make sure that when people commit, they commit to RAMP.

BACKGROUND

Enraged by continued US incursions into North Korea, JESTER and Kim Jong Un set aside their differences and launch a massive air attack against US and ROK forces.

CURRENT SITUATION

SCRAMBLE - SCRAMBLE - All Quick Reaction Alert pilots man your aircraft, North Korean aircraft are crossing the DMZ and heading towards Seoul.

MISSION DETAILS

Priority 1: Defend Osan airbase.

Priority 2: Defend Suwon and Pyeongtaeg airbase.

Weather –

Take off: Fair. Wind 10-15Knts@275. Thin Cloud deck A26. Broken cloud between A8 and A16.

Over Target: Fair. Wind 10-15Knts@275. Thin Cloud deck A26. Broken cloud between A8 and A16.

Landing: Fair. Wind 10-15Knts@275. Thin Cloud deck A26. Broken cloud between A8 and A16.

Enemy –

Known Air to Air Threats:

J8, SU15, Mig17, Mig19, Mig21, Mig23, Mig25, Mig29A, SU37, TU16, IL-28

Known Surface to Air Threats:

Not applicable.

Friendly –

There are no other flights in the air at this time.

ROE

Air To Air Threats: Free once positively ID'd as hostile.

Air To Ground: Free once positively ID'd as hostile or as fragged.

Good Luck

Next page for Osan Airport Diagram and approach plate.

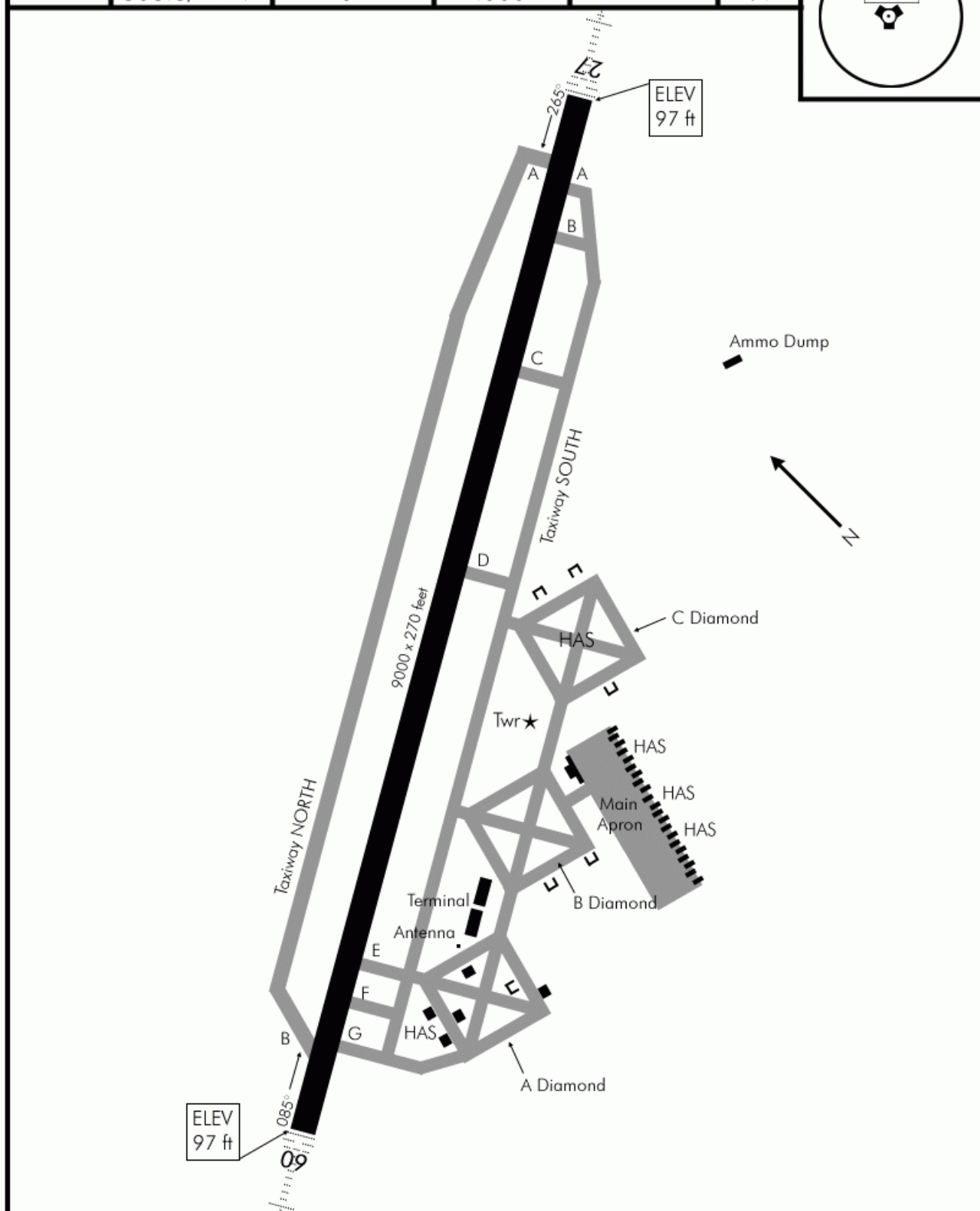
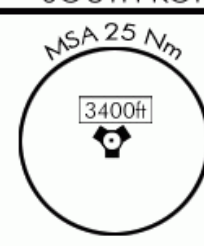
KOREAN NAVIGATION VOLUME

AIRPORT DIAGRAM

Date: 28 Dec 09

OSAN AB (RKSO)
SOUTH KOREA

TACAN:	TWR:	TRANS. LEVEL:	TRANS. ALT:	GPS:	ELEV:
094X	308.8/122.1	FL140	14.000ft	N37°03,80' E128°00.83'	97'



AIRPORT DIAGRAM

NOT FOR REAL NAVIGATION - FALCON 4 BMS ONLY

© COMBATSIM CHECKLISTS 2010

OSAN AB (RKSO)
SOUTH KOREA

KOREAN NAVIGATION VOLUME

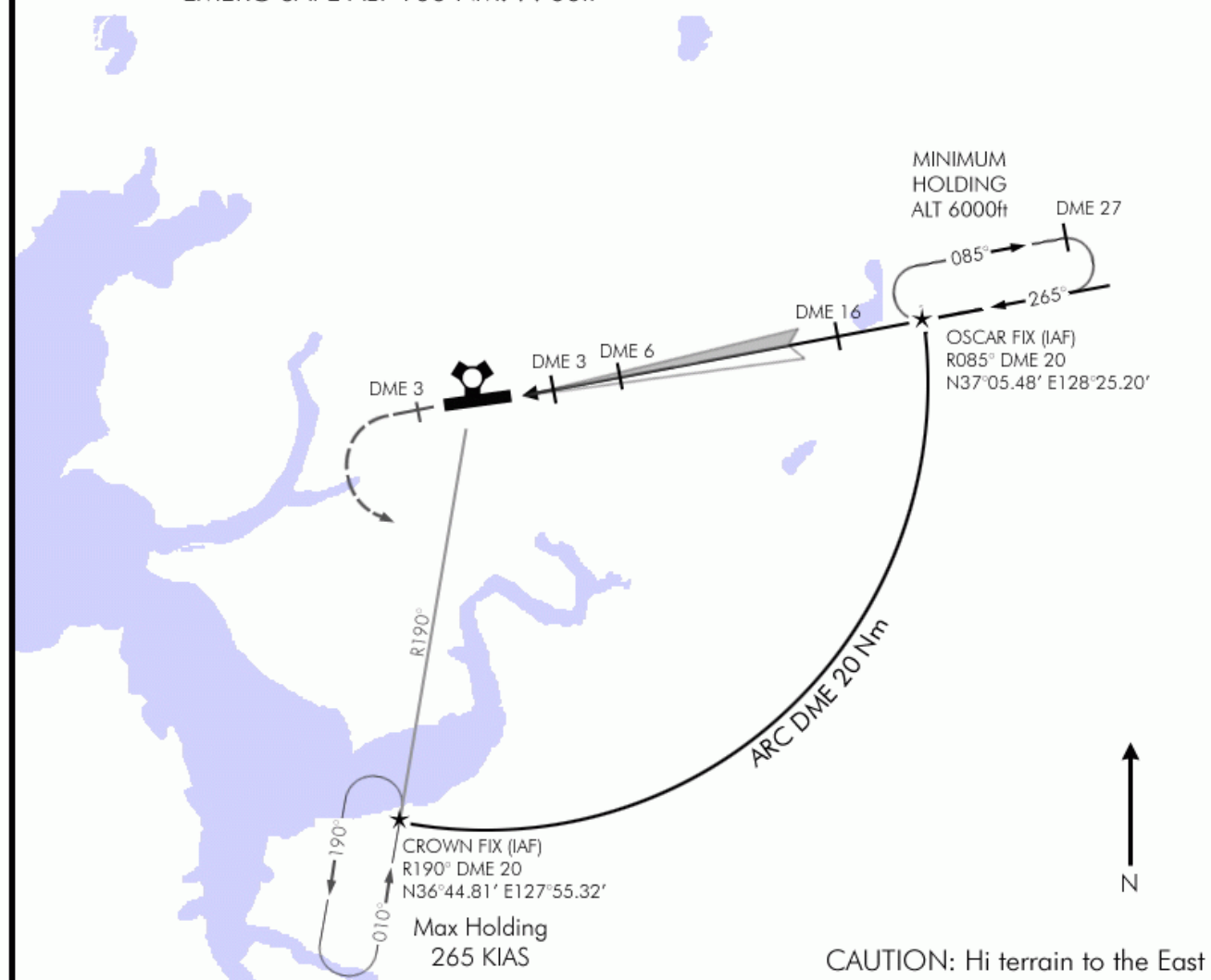
OSAN AB (RKSO)
SOUTH KOREA

ILS RWY 27

Date: 28 Dec 09

TACAN:	TWR:	ILS:	ILS DA(H):	LOC:	GPS:	ELEV:	MSA 25 Nm
094X	308.8/122.1	111.3	297'(200' AGL)	265°	N37°03.80' E128°00.83'	97'	3400ft
MISSED APPROACH: Climb Runway heading to 3DME, then LEFT climbing turn to 140°. Intercept and proceed via R-190 to CROWN and hold at 4000 unless otherwise directed by ATC.						ALSF-1 VASI VASI	

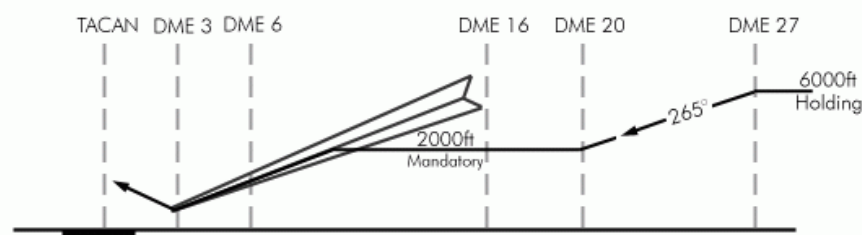
EMERG SAFE ALT 100 NM: 7700ft



CAUTION: Hi terrain to the East

Transition Level : FL 140

Transition Altitude : 14000ft



MINIMA:

ILS: 297'(200'AGL)*

Vis: 200-800m

LOC: 497'(400' AGL)**

Vis: 300-1600m

Circling: 897'(800'AGL)

Vis: 600-2000m

*When ALS inop, increase vis to 1200m

**When ALS inop, increase vis to 2000m

ILS RWY 27

NOT FOR REAL NAVIGATION - FALCON 4 BMS ONLY

© COMBATSIM CHECKLISTS 2010

OSAN AB (RKSO)
SOUTH KOREA

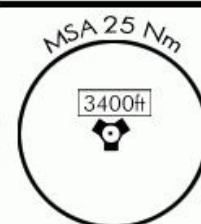
OSAN AB (RKSO)
SOUTH KOREA

Date: 28 Dec 09

TACAN:	TWR:	ILS:	ILS DA(H):	LOC:	GPS:	ELEV:
094X	308.8/122.1	111.3	297' (200' AGL)	085°	N37°03,80' E128°00.83'	97'

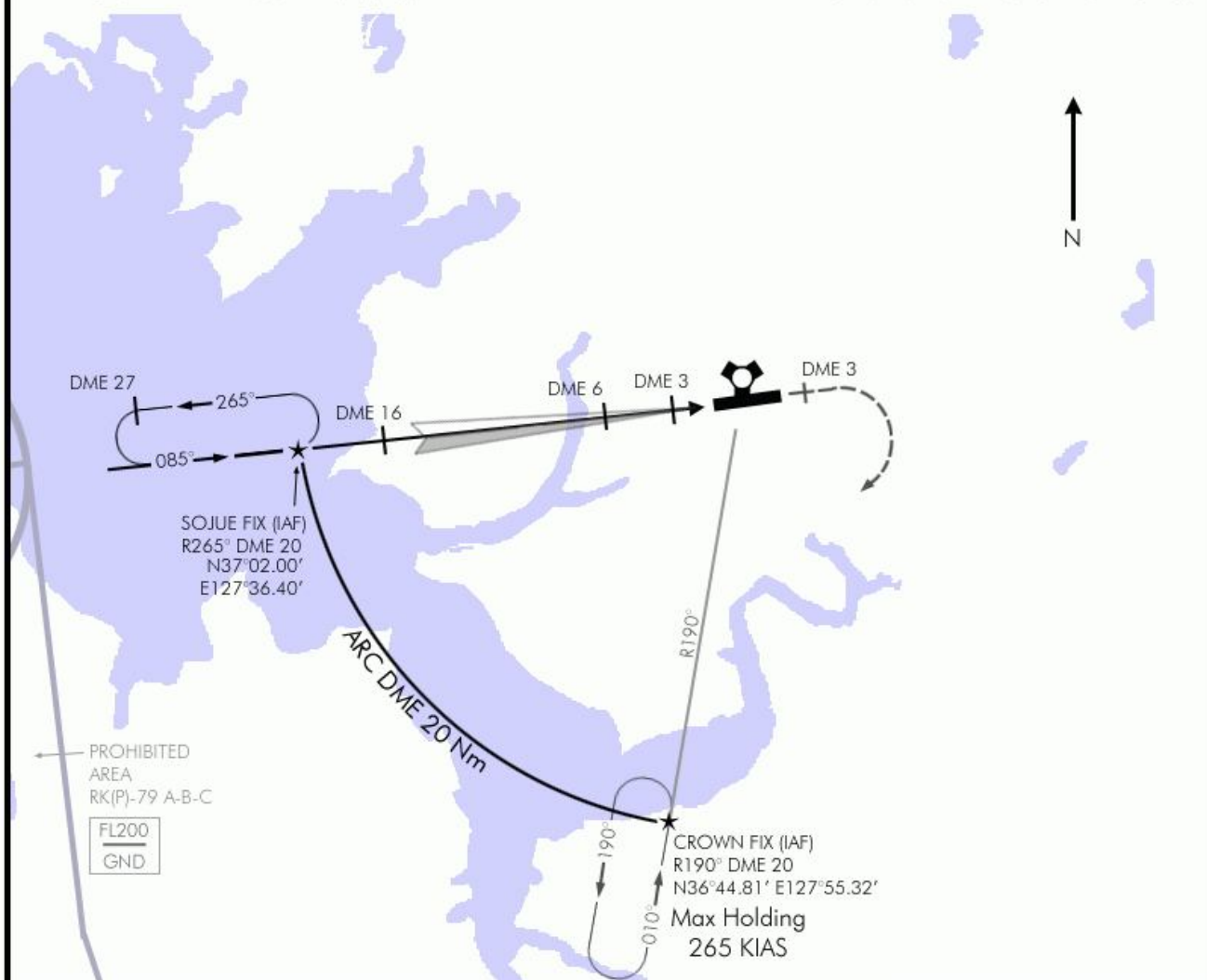
MISSED APPROACH: Climb Runway heading to 3DME, then RIGHT climbing turn to 230°. Intercept and proceed via R-190 to CROWN and hold at 4000 unless otherwise directed by ATC.

ALSF-1
VASI VASI



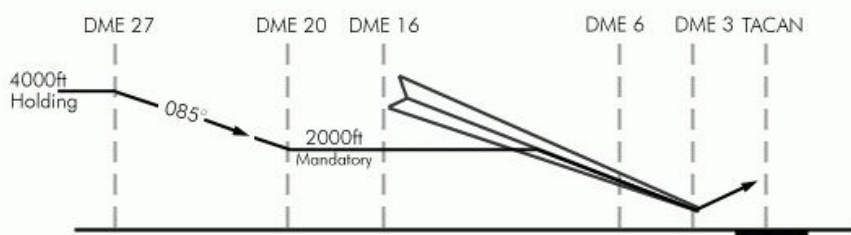
EMERG SAFE ALT 100 NM: 7700ft

CAUTION: Hi terrain to the East



Transition Level : FL 140

Transition Altitude : 14000ft



MINIMA:

ILS: 297'(200'AGL)*

Vis: 200-800m

LOC: 497' (400' AGL)**

Vis: 300-1600m

Circling: 897' (800' AGL)

Vis: 600-2000m

*When ALS inop, increase vis to 1200m

**When ALS inop, increase vis to 2000m

ILS RWY 09

NOT FOR REAL NAVIGATION - FALCON 4 BMS ONLY

© COMBATSIM CHECKLISTS 2010

OSAN AB (RKSO)
SOUTH KOREA